



LEGEND

- - Easy, flat or relatively so
 - - Moderate, generally hilly
 - ◆ - Difficult, steeper
 - ◆◆ - Much more difficult, very steep
 -  - Accessible to some people with disabilities
 -  - Restroom at trailhead or in vicinity. Many restrooms are closed in the winter
- Paved—Asphalt or concrete
- Gravel—Gravel surface
- Natural—Improved natural surface trail



PIKE NATIONAL FOREST

Barr Trail

(FS #620)
13 miles; natural



The Barr Trail Trailhead is located off Ruxton, past the Cog Railroad Depot in Manitou Springs.

This trail offers the greatest base-to-summit climb in Colorado to the summit of Pikes Peak with an altitude gain of over 7,000 ft. in 13 miles. On our difficulty scale, the trail is at the top of the list due to the elevation gain and distance.

Parking is available only at the trailhead in West Manitou Springs, off Ruxton, near the Cog Railroad Depot or at the summit. Trail users should be aware of and be prepared for the possibility of sudden weather changes, especially near the summit. Lightning storms are frequent during the afternoon, so don't be caught above treeline. Shelter and water are available at Barr Camp which is located approximately halfway up. Barr Trail offers the opportunity to pass through pine and juniper forests, sub-alpine, alpine and tundra meadows.

Climbing Pikes Peak for the first time? Find out a little more about hiking the Barr Trail by visiting our web site at www.trailsandopenspaces.org.


Some of the side trails off Barr Trail include: Mountain View

Trail which connects Barr Camp with the Cog Railroad, French Creek Trail to Ghost Town Hollow and Elk Park Knoll. Bottomless Pit Trail takes you to Bottomless Pit, a spectacular cirque (pit).

Bottomless Pit Trail ◆
(FS #632), 2.4 miles; natural

This is a trail on Pikes Peak that begins one mile up from Barr Camp and takes you to the bottom of the pit. It is a steep and difficult climb, gaining over 700 feet in altitude to an altitude of over 11,000 feet. You will see 3000-foot walls around you with numerous waterfalls. Don't get lost!

Crags Trail (FS #664), ●
1.5 miles; ■
natural, fee required.

Take Hwy. 24 to Divide,  then Hwy. 67 4.2 miles toward Cripple Creek. Drive to the Rocky Mountain Camp exit, on the left just past Mueller State Park. Turn in and drive 1.5 miles to the Crags Campground.

The Crags Trail provides one of the best cross-country ski areas in our region because of its altitude. It is also popular with cyclists, equestrians and hikers. The trail has something for everyone: forests, streams, meadows and rock formations. Spectacular views of the peak and North and South Cata-mountain and Crystal reservoirs are available.


Crystal Lake Nature Trail ●
1/2 mile, natural 

Take Hwy. 24 west to the Pikes Peak Hwy. in Cascade. Take the highway to Crystal Lake. Fee required.

This short interpretive trail is actually a Colorado Springs Utilities trail that begins at the top of the amphitheater west of the Crystal Lake Visitors Center on the Pikes Peak Highway. Since it is on Pikes Peak, we've included it here. It is a gentle climb to an enclosed platform overlooking Pikes

Peak beyond the lake. Fantastic views.

Devils Playground Trail ◆◆
7.5 miles; natural

Take Hwy. 24 to Divide,  then Hwy. 67 toward Cripple Creek. Turn left at the Rocky Mountain Camp, just past Mueller State Park. Turn in and drive 1.5 miles to the Crags Campground.

This trail connects the Crags Campground to the summit of Pikes Peak, providing a shorter and less crowded alternative to Barr Trail. Once you've started on the Crags Trail, look for the log crossing on the right to access the trail to the summit. Spectacular views with streams, forests, incredible tundra, wildflowers and wildlife. The trail is steep and rough after you reach timberline. Watch for storms above and take shelter.

Elk Park Trail ■ ◆
(FS #652),
5+ miles; natural
Toll road fee required.

To find Elk Park Knoll, drive the Pikes Peak Toll Road to a point one mile past Glen Cove at timberline. Drive left between the metal posts. It looks like you will drive off the



mountain, but have faith, there is a road there.

Elk Park Trail on Pikes Peak provides a spectacular alternative trail off Barr Trail or off the toll road for hikers and runners. It is heavily used by runners training for the Pikes Peak Ascent or Marathon.

Virtually every trail in the region offers opportunities to view wildlife. But, in the forest there might be wildlife watching you.



From Barr Camp, it is a difficult climb up to Elk Park Knoll and parking area (1680 foot elevation gain) but a fairly easy run or hike down from the knoll to Barr Camp. Elk Park Knoll is above treeline. From Elk Park Knoll, you have incredible views of the surrounding countryside. You pass through forests, meadows and streams on the way to Barr Camp. Some of the trail is badly eroded, so be careful.

At the bottom of the most eroded part, you will find signs to Barr Camp or to the Oil Creek Tunnel (1/4m) and Ghost Town Hollow. This interesting side trip passes aging and decayed cabins. There are remains of old mining equipment at the mine.

Gold Camp Road
(Colorado Springs)
8 miles; gravel road



Go west on Cheyenne Blvd and Cheyenne Canyon Blvd. to North Cheyenne Canyon. Park at the trailhead above Helen Hunt Falls.

As the former narrow-gauge railroad bed for the train to Cripple Creek, the surface is an easy grade through some of the most spectacular scenery in America. There are numerous side trails and you get a touch of the Old West passing through the tunnels. Trails accessed by Gold Camp Road include St. Mary's Falls and Seven Bridges.

HORSETHIEF PARK ●
mileage varies for each trail; natural



Take Hwy. 24 west to Divide, then south on Hwy. 67 towards Cripple Creek. Park on the Cripple Creek side of the old closed tunnel. Three trails use the same trailhead. These are grand trails for everyone. Located on the Cripple Creek side of the Little Ike Tunnel, it takes you up past the tunnel. Hike, ski, ride or bike the steep grade to the high mountain meadow. This is a splendid way to view the aspen.

1. Horsethief Park Trail (FS #704) – 1.5 miles natural surface, easy. The first part of the scenic trail uses an old roadway passing through meadows and forest. Once in the valley, turn left across the stream and take the road on the other side.

2. Horsethief Park to Pancake Rocks (FS #704A) 2.75 miles, natural surface, difficult.

Lovell Gulch Trail ●
5.5 miles; natural

Go west on Hwy. 24 to Woodland Park; turn right on Baldwin behind McDonald's and drive 0.9 miles past Woodland Park Middle School. The trailhead is well marked on the left.

Take the loop counterclockwise. Hike, run, bike, cross-country ski or ride your horse through beautiful Lovell Gulch. Filled with wildflowers this loop trail provides something for everyone: gentle rolling hills, forests and scenic vistas. Stay on the posted trail.

Monument Fire Center ■
22 miles; natural



Park at the corner of Mt. Herman and Schilling Rd. or on several pulloffs off of Mt. Herman or Schilling Roads. Go from downtown Monument, across the railroad tracks and south on Mitchell Ave. to Mt.



Start up the trail and continue straight (east) to the intersection marked for the Falls and Pancake Rocks. Take a right for 2 miles to the rocks. Keep going past the first pancake-like rocks to the end of the trail and a second set of pancake rocks.

3. Horsethief Falls Trail (FS #704B) 1.75 miles, natural surface, moderate. At the Pancake Rocks intersection, follow the stream east up to the falls.

Herman Road. Turn west for 0.6 mile, then south to Schilling Road. Alternatively, park at the trailhead at Mt. Herman Rd. and Schilling.

The Pike National Forest Monument Fire Center has a multitude of criss-crossing trails for hiking, cycling or horseback riding. They provide access to Monument Rock and the small pond near the rock. The trails pass through scrub oak, ponderosa pine forests and

open areas. The Fire Center is a historic area which provided the seedlings to revegetate fire-damaged areas in the early part of the century. Parking is very limited. Do not block the entrance to the Fire Center as it is the home to the Pike Hot Shots, a fire response team that must be able to get in and out quickly. Look for the memorial to fallen firefighters.

Monument, Forest Service Trail #715 ■◆

To find the trail, go west on 2nd St. from downtown Monument, across the railroad tracks and south on Mitchell Ave. to Mt. Herman Road. Turn west for 0.6 mile, then south to where Schilling Road meets Lindbergh Ave. Park and go through the stile in the fence and up the road to the trail.

Neat for horses, bicyclists and hikers with some steep climbs, and beautiful views through heavily forested areas with streams. Follow the trail up N. Beaver Creek to a tributary and over a saddle behind Mt. Herman. The descent along Monument Creek is steep. There is a very steep climb left to Balanced Rock Road. The trail finishes on a private road and loops back to the Monument Fire Center. No bikes or horses are allowed past the gate to Palmer Lake.

Mount Esther Trail ■◆

Take Hwy. 24 west to Chipita Park, then take Chipita Park Rd, to Picabo Road and turn uphill. A steep climb intersects uppermost Mountain Road. Look for the trailhead sign just east of the intersection of Picabo and Mountain Road.

Mt. Esther Trail is a hiking-only trail that winds steeply up through an aspen forest to Crow Gulch, a picnic area on the Pikes Peak Toll Road.

Mount Herman Trail ■

(FS #716), 2 miles; natural

Go west on 2nd St. from downtown Monument, across the railroad tracks and south on Mitchell Ave. to Mt. Herman Road. Continue on Mt. Herman Road about 4.5 miles (bear to the left at the fork) to the trailhead on the right. An alternate trailhead is at the intersection of Mt. Herman Rd. and Schilling (0.8 miles west of Michell.) Mt. Herman Trail goes to the summit. Provides tremendous views of the front range and the eastern plains.

Rainbow Gulch Trail ●

(FS #714), 1.5 miles; natural

Take Rampart Range Road from Garden of the Gods Park or go to Woodland Park, turning behind McDonald's on Baldwin St. Go 2.9 miles to Loy Creek Road, bear right to Rampart Range Road; take a right. Free parking is available at Rainbow Gulch Trailhead (on the left, 2.4 miles from the beginning of Rampart Range Road).

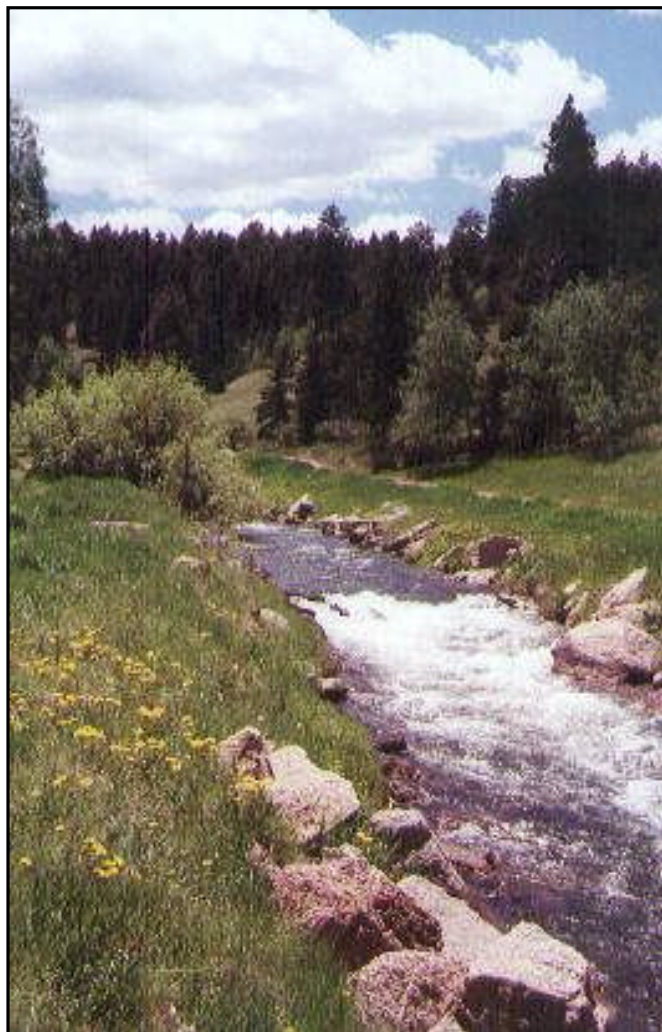
Rainbow Gulch Trail is an easy trail suitable for skiing and biking to Rampart Reservoir. It offers a free parking alternative to the reservoir. This trail is heavily used by mountain bikers in the warmer months and cross-country skiers in the winter. It is a gentle ride or walk down to the lake from here.

Rampart Reservoir Trail ●

(FS #700), 13 mile loop, natural



You can reach the reservoir by taking Rampart Range Road from Garden of the Gods Park or going to Woodland Park, turning behind McDonald's on Baldwin St. Go 2.9 miles to Loy Creek Road, bear right to Rampart Range Road and follow the signs. Parking areas abound. Free parking is available at Rainbow Gulch Trailhead (on the left, 2.4 miles from the beginning of Rampart Range Road).



Rainbow Gulch

Rampart Reservoir Trail is an incredibly scenic trail around the lake that is popular with bicyclists, runners and cross-country skiers. You can no longer drive across the dam. It is suggested that cyclists ride clockwise. Take the 2.3-mile Nichols Trail down to Nichols Reservoir.

St. Mary's Falls Trail ■◆◆

(FS #624), 3 miles; natural

Take Cheyenne Canyon Road through the canyon to the trailhead above Helen Hunt Falls. Take the closed section of Gold Camp Road a little over a mile to the trail on the right. Follow the metal signs.

A little further to go but well worth it! Try the other side of Pikes Peak.



Most trails in the region are non-motorized, multi-use but some trails in Pike National Forest allow motorized vehicles.



Waldo Canyon

The trail itself is another 1.6 miles to the falls up a moderately difficult path (steep towards the top). The trail goes through a forest of pines and spruce and follows the creek.

Seven Bridges Trail (FS #622), 1.5 miles, natural

Take Cheyenne Canyon Road up the canyon to the trailhead above Helen Hunt Falls. Take Gold Camp Road from the trailhead by the closed section of the road and go one-half mile to the trail on the right.

Delightful trail alongside a creek with seven bridges. The trail follows North Cheyenne Creek and goes to Undine Falls. Be careful in the winter as the trail stays icy and snow packed. One slip could take you into the creek. The trail offers access to the Pipeline Trail and to Jones Park Trail.

Waldo Canyon Trail 6.8 miles; natural

Drive two and one-quarter miles west of Manitou Springs on U.S. 24. There is a large parking lot on the north side of the highway.

Waldo Canyon is one of the most popular trails in the region; take a look at the parking lot anytime you drive up Ute Pass. Waldo Canyon is a gorgeous loop trail through a scenic wooded canyon. The trail overlooks Williams Canyon. The trail is generally crowded; try early mornings and weekdays to avoid the rush. It's a good trail for mountain bikers and runners.

Vary your trail experience. If you normally use a paved trail in your neighborhood, try out one of the incredible national forest, park or open space trails in the